



Goodwin Academy

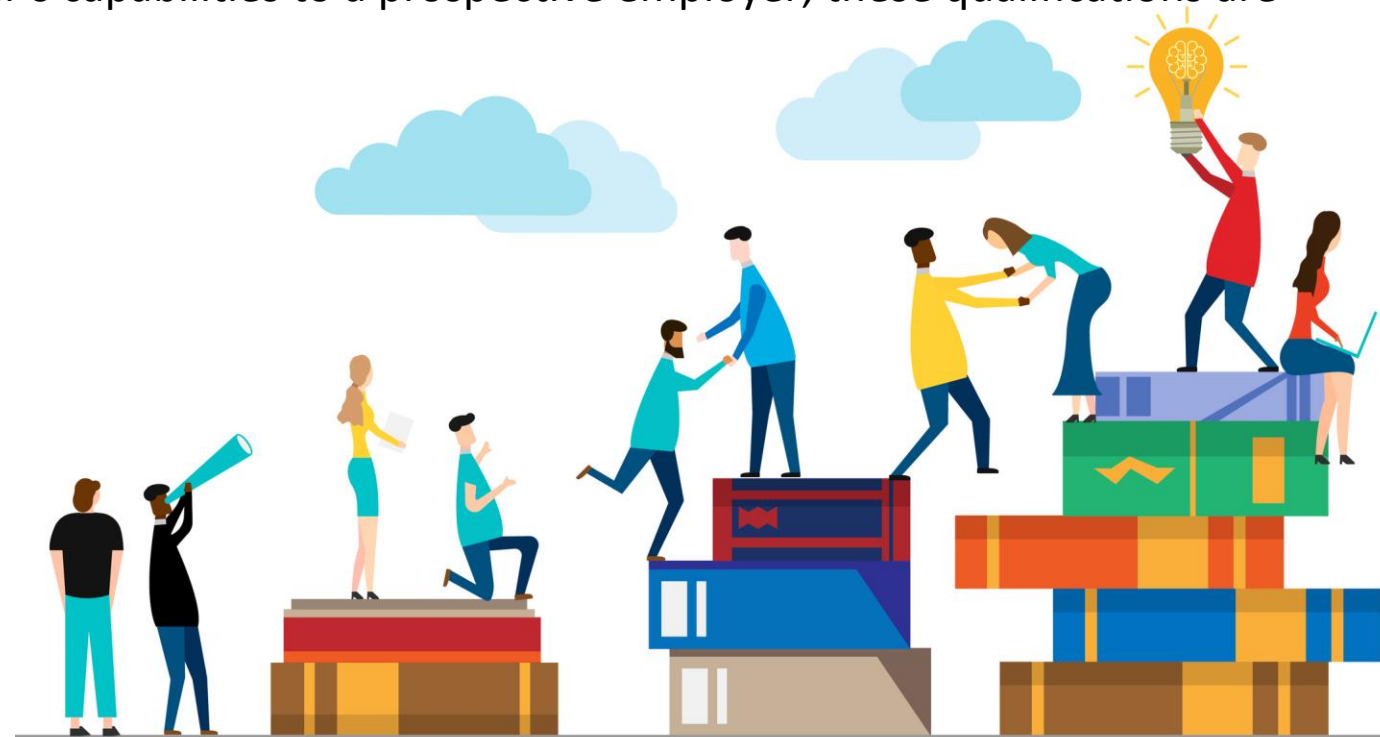
Sixth Form Course Guide

2023-2025

Choosing courses for study at Goodwin Academy Sixth Form

Why Study at Goodwin Academy Sixth Form?

- Further academic study at Sixth Form is rewarding because it is intellectually stimulating and challenging.
- Level 3 study is the stepping stone to university and can offer many opportunities in the future.
- Level 3 courses provide a benchmark for the learner's capabilities to a prospective employer; these qualifications are highly valued for the skills base they develop.



Sixth Form Programmes of Study

Courses that we offer allow students the opportunity to achieve at Level 3 and could lead to university, employment or further training, for example Higher Level Apprenticeships.

- Goodwin Academy is committed to offering a wide range of courses to suit the needs of learners within the local area.
- The courses that we offer are a mix of A-level and vocational qualifications. A-level courses include exams at the end of two years of study, whereas vocational qualifications are assessed through coursework and examinations over the two year period. The BTEC National Extended Certificate courses are equivalent to one A-Level, whereas the BTEC National Diploma courses are equivalent to two A-Levels.
- **Entry requirements** - to study the courses offered at Level 3, students will need to have achieved 5 x 9-4 grades at GCSE (including a 4 English) or equivalent; this can include vocational courses. Some courses might have extra requirements and these are outlined in this course prospectus.

Additional opportunities to enhance the study programme:

- An Enrichment Course is timetabled with the whole year group together; this enables us to offer a robust programme including study skills and regular guest speakers. The Enrichment Course also includes the opportunity to take part in student selected projects that support the community or allow for the pursuit of hobbies and interests.
- Work experience is expected during Year 12 and this takes the form of a one week work experience placement.
- Leadership opportunities are encouraged with Sixth Form students taking on the role of mentors and study support for students in the younger years of the school. There is also the opportunity to become a Prefect or a member of the Junior Leadership Team (JLT) and have a voice in the growth and development of the Academy.
- Supervised study time is provided for all Sixth Form learners. This is to develop independence in their learning.
- Sixth Form also offers the opportunity for students to study additional courses alongside the main curriculum offer, these include Maths GCSE resit, Extended Project Qualification, Level 3 Finance and Level 3 Core maths.

Support for all Goodwin Academy Sixth Form students:

The Sixth Form staff take great pride in the support and care they put in place for all students. We treat each student as an individual and take great care to meet and respond to specific needs. This can include:

- Regular contact with the Sixth Form Leadership and Wellbeing team
- Guidance and support for Higher Education and Careers
- Regular progress reviews, with subsequent support put in place where needed
- Parent consultation meetings for Year 12 and Year 13 students

We operate an 'open door' policy and are always available for students or parents who wish to discuss any part of life as a sixth form student.



Goodwin Academy

Sixth Form Subject Offer

Delivering the BEST Sixth Form education



Our offer for 2022-24:

As a condition of Sixth Form you will be expected to select **three courses from Blocks A-D**. This can be either three single courses or a combination of a double and a single course. In addition to your 3 Course Programme we recommend that learners choose an enrichment option to give them a broader experience.

The courses below are proposed for 2022-24. However, they are subject to change if circumstances dictate.

Block A	Block B	Block C	Block D	Block E Enrichment
Criminology	Health Social Care	Art A LEVEL	Applied Psychology	Maths Resit
Sport Double	Photography A LEVEL	History A LEVEL	Sport Single	EPQ
Biology A LEVEL	English Lit A LEVEL	Applied Science		LIBF
	Business BTEC	Uniformed Protective Services BTEC		Core Maths

Please note If I wanted to do Sport Double you would choose Sport Single in Block D and Sport Double in Block A, then a third option from either Block B or C. You can do Sport Single in block D on its own but to do the double you must choose both options in A and D.

A-LEVEL BIOLOGY

AQA A –Level Biology

The biology course offers students the opportunity to study a wide range of interesting topics, from the intricate details of cell structure and biochemistry to entire ecosystems. Animals, plants and micro-organisms are all considered in terms of the workings of their cells, evolution, genetics, behaviour; with consideration of how they can be used to benefit humankind through biotechnology. Current concerns about human impact on the Earth are examined along with the challenges of maintaining bio-diversity and sustainably managing the environment.

Units will include:

Biological molecules & Cells
Organisms exchange substances with their environment
Genetic information, variation and relationships between organisms
Energy transfers in and between organisms
Organisms respond to changes in their internal and external environments
Genetics, populations, evolution and ecosystems & The control of gene expression

Assessment:

3 external exams (2 hours each)

Interests:

Biology, Biochemistry, Genetics, Evolution, Physiology, Homeostasis, Ecology and Careers in STEM subjects (Science, Technology, Engineering or Maths).

Personal attributes:

Independent research skills, organised, attention to detail, self-disciplined, analytical, high levels of literacy and numeracy.

Skills:

Independent thinking, application of the scientific method, numeracy, selecting instruments and equipment, researching and referencing.

Entry requirements:

5x GCSE grades 9-4.
You should have at least a grade 6-6 in GCSE double award science or a grade 6 in separate GCSE biology and chemistry as part of a strong GCSE profile.
You should have at least a grade 6 in GCSE English language and in GCSE maths.

Employment:

The range of courses and work opportunities involving biology is vast and includes: veterinary science, medicine, dentistry, physiotherapy, sport science, psychology, pharmacy, biotechnology, zoology, marine biology and many others.

University:

Degrees in a diverse range of subjects including Teaching, Nursing, Forensics, Genetics, Ecology, Zoology, Pharmacology, Ecology, Biomedical Sciences and Animal Sciences.

Transferable skills:

Methodical approach, Clear and logical thinking, Attention to detail, Time management, Working independently yet collaborate within a team, Originality, Self-appraisal techniques

Questions

APPLIED SCIENCE EXTENDED CERTIFICATE

BTEC Level 3 National Extended Certificate Applied Science

This qualification enables students to acquire substantial cross-sector scientific knowledge and practical scientific skills, including carrying out practical laboratory tasks, planning investigations, collecting, analysing and presenting data, and reviewing and refining the methodology of practical and laboratory based work.

The Level 3 Extended Certificate is equivalent to 1 A-level.

Units – 4 units of coursework

This will include:

Principles and Applications of Science I
Practical Scientific Procedures and Techniques
Science Investigation Skills
Physiology of Human Body Systems

Assessment:

2 external assessments, 2 pieces of assessed coursework.

Interests:

Biology, Chemistry and Physics, Careers in STEM subjects (Science, Technology, Engineering or Maths).

Personal attributes:

Independent research skills, organised, attention to detail, self-disciplined, analytical, able to produce high quality coursework.

Skills:

Carrying out practical laboratory tasks, planning investigations, collecting, analysing and presenting data, and reviewing and refining the methodology of practical and laboratory based work.

Entry requirements:

5x GCSE grades 9-4.
A grade 5 in English, Maths and 5-6 in Science is required.

Employment:

Huge variety of science and non-science related professions e.g. NHS, veterinary nursing, lab technician.

University:

Degrees in a diverse range of subjects including Teaching, Nursing, Forensics, Pharmacology, Chemical Engineering, Psychology, Ecology, Biomedical Sciences and Animal Sciences.

Higher Apprenticeships:

This course is ideal for students thinking of applying for apprenticeship or employment in the STEM industries or NHS.

Questions

A-LEVEL ENGLISH LITERATURE

English Literature A-Level

Over two years, you will analyse the way social and political protest has influenced a range of writers' works, developing skills of language analysis, the application of social and literary context and the formulation of argument.

You will also explore English literature through the genre focus of tragedy.

Course Content:

Component 1: Literary Genres: Aspects of Tragedy

Component 2: Elements of Social and Political Protest Writing

Component 3: Non-Examined Assessment: Theory and Independence

Assessment:

2 x written examinations (80%) and 2 x essays (20%).

Interests:

Journalism, reading, creative writing, poetry, history.

Personal attributes:

Organised, determined, committed, open to varied texts and viewpoints.

Skills:

Language analysis, inference, explanations, critical thinking, clear sophisticated communication.

Entry requirements:

A grade 4 or higher in both GCSE English Language and GCSE English Literature.

Employment:

Journalism, Author, Poet, Linguist.

University:

English Literature A Level can form the basis of many different courses in Higher Education including English and Journalism.

Transferable skills:

Public interaction, public speaking, creative thinking, reading and writing.

Questions

A-LEVEL HISTORY

A-Level History

The course aims to provide an engaging, complex and diverse program of study which will motivate and inspire students in their continued study of History suitable for learners who want to continue their education through A-Level.

Topics:

Paper 1: Britain Transformed, 1918-97
Paper 2: The USA, c1920-55: boom, bust & recovery
Paper 3: The witch craze in Britain, Europe and North America c1580-c1750
Course work, Student choice

Assessment:

3 x Exams and 1 course work. 80% Examined 20% course work.

Interests:

History, understanding the world in which we all live, current affairs.

Personal attributes:

Disciplined, passionate, reliable, critical.

Skills:

Strong communication skills (verbal, non-verbal and listening), problem solving, critical thinking.

Entry requirements:

5 x GCSE grades, 4-9. Grade 5-9 at History GCSE, Grade 4 for English Language and mathematics is required.

Employment:

This course will open up a wide array of career pathways that can include: Lawyer, Print Journalist, Broadcast Journalist, Video game researcher, Marketing executive, Politician, Solicitor, Talent agent, Teacher.

University:

Undergraduate or Foundation Degrees in a range of subjects, including degrees in History, The History of Art, Politics, Media, English, Law, Politics.

Transferable skills:

This course develops key professional skills, such as: Using critical thinking, interpersonal skills, communicating, working collaboratively, negotiating and influencing, self-presentation, self-management, adaptability and resilience, self-monitoring and development.

Questions

A-LEVEL ART & DESIGN

A-Level Art & Design

The qualification is designed for post-16 learners who aim to progress to higher education and ultimately to employment, possibly in the creative industries, as part of a programme of study alongside other BTEC Nationals or A Levels.

Component 1: Personal Portfolio (60%)
Component 2: Externally Set assignment (40%)

Assessment:

Presentation of portfolio (60%) and timed exam (40%).

Interests:

Interests could be based in any of the following: media and advertising, fashion, journalism or design based work, fine art, photography, textiles, design, illustration, printmaking, graphics, sculpture, film and many more.

Personal attributes:

Disciplined, passionate, adaptable, observant, original, imaginative, curiosity.

Skills:

Working independently, excellent communication and teamwork skills, enthusiasm to seek out new perspectives, creating and building on existing knowledge, being open to feedback and learning new skills, processes and techniques.

Entry requirements:

5 x GCSE grades 9-4.

Employment:

Artist Practitioner, Education, Psychology (Art Therapy), Photographer, Animator, Concept Artist (computer games and film), Graphic Designer.

University:

Undergraduate or Foundation Degrees in a range of subjects, including: Photography, Graphic Design. Art and Design, Fashion, Fine Art, Designer, Architecture, Digital Art.

Higher Apprenticeships:

3D Design, Prop Making Essentials, Visual Merchandising, Qualified Tool Maker, Web Design.

Questions

A-LEVEL PHOTOGRAPHY

A-Level Photography

The qualification is designed for post-16 learners who aim to progress to higher education and ultimately to employment, possibly in the creative industries, as part of a programme of study alongside other BTEC Nationals or A-Levels.

Course Content:

Component 1: Personal Portfolio (60%)

Component 2: Externally Set assignment (40%)

Assessment:

Presentation of portfolio (60%) and timed exam (40%).

Interests:

Interests could be based in any of the following: media and advertising, fashion, journalism or design based work, fine art, photography, textiles, design, illustration, printmaking, graphics, sculpture, film and many more.

Personal attributes:

Disciplined, passionate, adaptable, observant, original, imaginative, curiosity.

Skills:

Working independently, excellent communication and teamwork skills, enthusiasm to seek out new perspectives, creating and building on existing knowledge, being open to feedback and learning new skills, processes and techniques.

Entry requirements:

5 x GCSE grades 9-4.

Employment:

Artist Practitioner, Education, Psychology (Art Therapy), Photographer, Animator, Concept Artist (computer games and film), Graphic Designer.

University:

Undergraduate or Foundation Degrees in a range of subjects, including: Photography, Graphic Design. Art and Design, Fashion, Fine Art, Designer, Architecture, Digital Art.

Higher Apprenticeships:

3D Design, Prop Making Essentials, Visual Merchandising, Qualified Tool Maker, Web Design.

Questions

SPORT NATIONAL EXTENDED CERTIFICATE (SINGLE)

BTEC Level 3 National Extended Certificate in Sport

This course would suit individuals that have an interest in undertaking a career in sport or health related areas such as sports nutrition, sports psychology, teaching physical education, sports therapy, sports development and sports coaching, amongst others.

The course is an extension of the BTEC Level 3 National Extended Certificate in Sport.

The Extended Certificate is also offered and is equivalent to 1 A-Level.

Units include:

Unit 1: Anatomy and Physiology (externally assessed)
Unit 2: Fitness Training and Programming for Health, Sport and Well-being (externally assessed)
Unit 3: Professional Development in Sports Industry
Unit 4: Sports Leadership

Assessment:

4 units of study (3 mandatory and 2 externally assessed).

Interests:

Coaching, playing sport, physiology (understanding the body during exercise), psychology (the use of the mind during exercise), training to improve fitness, nutrition.

Personal attributes:

Sportsmanship, decision making, teamwork & leadership, practical ability to play sport.

Skills:

Strong communication skills, planning and organisation, performance analysis, analysis of data and trends.

Entry requirements:

5 x GCSE Grades 9-4 including English.
Desirable Level 2 Pass or above in BTEC Sport but not compulsory.

Employment:

The sport industry is extremely large and career pathways can include: Sports Coach, Fitness Instructor, PE Teacher, Fitness Magazine Editor, Sports Scientist, Sports Psychologist, Physiotherapist.

University:

Undergraduate or Foundation Degrees in a range of subjects, including degrees in Sports Studies and Business, Sports Psychology, Sports Education, Sports and Exercise Science, Sports Studies.

Higher Apprenticeships:

Sports teaching assistant, leisure assistant, coaching, spectator safety, fitness instruction. There are also a wide range of National Governing Body Qualifications available.

Questions

SPORT NATIONAL DIPLOMA (DOUBLE)

BTEC Level 3 National Diploma in Sport

This course would suit individuals that have an interest in undertaking a career in sport or health related areas such as sports nutrition, sports psychology, teaching physical education, sports therapy, sports development and sports coaching, amongst others.

The course is an extension of the BTEC Level 3 National Extended Certificate in Sport.

This course is equivalent to 2 A-Levels.

Units include:

Unit 1: Anatomy and Physiology (externally assessed)
Unit 2: Fitness Training and Programming for Health, Sport and Well-being (externally assessed)
Unit 3: Professional Development in Sports Industry
Unit 4: Sports Leadership

Assessment:

9 units of study (6 mandatory and 3 externally assessed).

Interests:

Coaching, playing sport, physiology (understanding the body during exercise), psychology (the use of the mind during exercise), training to improve fitness, nutrition.

Personal attributes:

Sportsmanship, decision making, teamwork & leadership, practical ability to play sport.

Skills:

Strong communication skills, planning and organisation, performance analysis, analysis of data and trends.

Entry requirements:

5 x GCSE Grades 9-4 including English.
Desirable Level 2 Pass or above in BTEC Sport but not compulsory.

Employment:

The sport industry is extremely large and career pathways can include: Sports Coach, Fitness Instructor, PE Teacher, Fitness Magazine Editor, Sports Scientist, Sports Psychologist, Physiotherapist.

University:

Undergraduate or Foundation Degrees in a range of subjects, including degrees in Sports Studies and Business, Sports Psychology, Sports Education, Sports and Exercise Science, Sports Studies.

Higher Apprenticeships:

Sports teaching assistant, leisure assistant, coaching, spectator safety, fitness instruction. There are also a wide range of National Governing Body Qualifications available.

Questions

BUSINESS STUDIES EXTENDED CERTIFICATE

BTEC Level 3 National Extended Certificate in Business

The Extended Certificate is for learners who are interested in learning about the business sector range of higher education courses or employment in business.

The extended Certificate is equivalent to 1 A-Level.

Units:

Exploring Business
Developing a Marketing Campaign
Personal and Business Finance
Recruitment and selection

Assessment:

4 units of study (2 coursework and 2 externally assessed).

Interests:

Developing and understanding of business and entrepreneurship.

Personal attributes:

Disciplined, organised, good team worker, independent.

Skills:

Effective researcher, creative, analytical, strong verbal and written communication skills.

Entry requirements:

5 x GCSE grades 9-4.
A grade 4 in English language is required.

Employment:

Relevant to all fields of employment; Accountancy, Advertising, Banking, Investment and Financial Services, General Management, Retail Management, Sales and Marketing.

University:

Undergraduate or Foundation Degrees in a range of subjects, supporting many other degrees including: Business, Accountancy, Marketing.

Higher Apprenticeships:

Business Administration, Accountancy, Banking and Finance, Human Resources.

Questions

UNIFORMED PROTECTIVE SERVICES EXTENDED CERTIFICATE

BTEC Level 3 Uniformed Protective Services – Extended Certificate

This course offers an insight into the Uniformed Protective Services and develops an understanding of the opportunities within this sector.

This qualification is the equivalent of 1-A Level.

Units will include:

- Teamwork, Leadership and Communication in the Uniformed Protective Services
- Behaviour and discipline in the Uniformed Protective Services
- Skills for Outdoor Activities and the Uniformed Protective Services
- Police Powers and the Law

Assessment:

4 Units, 1 Externally assessed and 3 Internally assessed

Interests:

Serving the public, working with the community, working with people, drive to succeed.

Personal attributes:

Disciplined, passionate, reliable, trustworthy, compassionate.

Skills:

Strong communication skills (verbal, non-verbal and listening), teamwork & leadership, problem solving.

Entry requirements:

5 x GCSE grades 9-4.
A grade 4 for English Language is required.

Employment:

Career pathways can include: Police, Fire & Rescue, Prison Service, Coastguard, Border Force, National Health Service, Armed Forces, Intelligence services.

University:

Undergraduate or Foundation Degrees in a range of subjects, including: Public Services, Criminology, Business Management, Policing, Politics.

Higher Apprenticeships:

Border Force, Policing, Security, Fire service, HM Forces.

Questions

HEALTH & SOCIAL EXTENDED CERTIFICATE

OCR Cambridge Technical Extended Certificate in Health and Social Care

Studying the Extended Certificate will provide learners with the opportunity, through applied learning, to develop skills, knowledge and understanding required by the Health and Social Care sector as well as some academic skills to support further learning.

Equivalent to 1 A-Level.

Units will include:

Unit 1 Building positive relationships in health and social care
Unit 2 Equality, diversity and rights in health and social care
Unit 3 Health, safety and security in health and social care
Unit 4 Anatomy and physiology for health and social care

Assessment:

58% external, 42% coursework.

Interests:

Caring for others, helping others to achieve, equality and diversity.

Personal attributes:

Disciplined, organised, independent, team worker.

Skills:

Patient, effective researcher, analytical, effective verbal communication skills, strong written communication skills.

Entry requirements:

5 x GCSE grades 9-4.
A grade 5 in English language and Science is required.

Employment:

This could lead to employment in: Early Years Settings, Residential Care, Day Care Centres, Domiciliary Care.

University:

Undergraduate or Foundation degrees in a range of subjects including: Nursing, Midwifery, Paramedic, Social Work, Early Childhood Studies, Health and Social Care.

Higher Apprenticeships:

Social Care, Child Care and Education, Health Care Apprenticeships.

Questions

APPLIED PSYCHOLOGY EXTENDED CERTIFICATE

BTEC Level 3 National Extended Certificate in Applied Psychology

The course aims to provide a broad introduction that gives learners transferable knowledge and skills suitable for learners who want to continue their education through applied learning.

The Level 3 extended certificate is equivalent to 1 A-Level.

Units:

1. Psychological Approaches and Applications
2. Conducting Psychological Research
3. Health Psychology
4. Criminal and Forensic Psychology

Assessment:

Units 1 & 3 are externally assessed, Units 2 & 4 are internally assessed.

Interests:

Science, working with the community, coaching and mentoring.

Personal attributes:

Disciplined, passionate, reliable, trustworthy, compassionate.

Skills:

Strong communication skills (verbal, non-verbal and listening), problem solving, critical thinking.

Entry requirements:

5 x GCSE grades 9-4.
A grade 4 for English Language and mathematics is required.

Employment:

Psychology has a vast area of employment' career pathways and can include: Clinical Psychologist, Counselling Psychologist, Educational Psychologist, Forensic Psychologist.

University:

Undergraduate or Foundation Degrees in a range of subjects, including degrees in Applied Psychology, Health Psychology and Social Psychology.

Transferable skills:

Using critical thinking, interpersonal skills, communicating, working collaboratively, negotiating and influencing, self-presentation, self-management, adaptability and resilience.

Questions

CRIMINOLOGY

WJEC Level 3 Applied Diploma in Criminology

An understanding of criminology is relevant to many job roles within the criminal justice sector, social and probation work and sociology and psychology.

The applied Diploma is equivalent to 1 A-Level.

Units will include:

- 1 Changing Awareness of Crime
- 2 Criminological Theories
- 3 Crime Scene to Courtroom
- 4 Crime and Punishment

Assessment:

Units 1 & 3 are internally assessed, Units 2 & 4 are externally assessed.

Interests:

The judicial system, courtroom practice, why crimes are committed.

Personal attributes:

Organised, self motivated, self disciplined, good team worker, enquiring mind.

Skills:

Adaptable & resilient, communication skills, creative, critical thinking, effective researcher.

Entry requirements:

5 x GCSE grades 9-4.
A grade 4 for English Language is required.

Employment:

Relevant to these fields of employment; National Probation Service, Courts and Tribunals Service, National Offender Management Service.

University:

Undergraduate or Foundation Degrees in a range of subjects, supporting many other degrees, including: Criminology, Criminology & Psychology, Law with Criminology, Psychology & Sociology.

Transferable skills:

Using critical thinking, interpersonal skills, communicating, working collaboratively, negotiating and influencing, self-presentation, self-management, adaptability and resilience.

Questions

Goodwin Academy

Sixth Form Enrichment Options

Delivering the **BEST** Sixth Form education



LEVEL 3 CERTIFICATE IN FINANCIAL STUDIES

Level 3 Certificate in Financial Studies

This course covers the core disciplines of financial education. Students are encouraged to become responsible borrowers, sensible savers, and have an appreciation of the need for financial planning throughout their life. The qualification is a comprehensive introduction to personal finance. It develops the knowledge and skills required for you to make informed financial decisions by introducing you to the risks and challenges involved in personal finance and the tools for effective planning.

This course offers UCAS points.

Units will include:

Unit 1: Financial Capability for the Immediate and Short Term
Unit 2: Financial Capability for the Medium and Long Term

Assessment:

Both units are assessed through an online exam and a case study response.

Interests:

Developing an understanding of personal financial and money management, decision making and the current financial picture.

Personal attributes:

Includes decision making, problem solving, the challenging of assumptions and critical analysis, organised, motivated, independent.

Skills:

Students are encouraged to use an enquiring, critical and thoughtful approach to personal finance. Strong verbal and written communication skills are required

Entry requirements:

5 x GCSE grades 9-4.
A grade 4 in English is required.

Employment:

Relevant to all fields of employment; Accountancy, Banking, Financial Services.

University:

This course provides UCAS points towards university applications. It also supports financial and business related courses.

Higher Apprenticeships:

Business Administration, Accountancy, Banking and Finance, Human Resources.

Questions

LEVEL 3 CORE MATHS

Level 3 Certificate in Mathematics in Context

The Edexcel Level 3 certificate in Mathematics in Context is a post 16 qualification designed to equip learners to develop and apply real-world maths skills and progress to university, employment or higher apprenticeships in a wide range of sectors.

This course offers UCAS points.

Units will include:

Applications of Statistics
Linear Programming
Probability
Sequences and Growth

Assessment:

100% exam based. Paper 1 comprehensions 40%, paper 2 applications 60%

Interests:

It uses real-world, relevant content, and offers a fresh assessment experience for learners with adult, context based problem-solving tasks.

Personal attributes:

Interested in real world maths problems, logical and creative.

Skills:

Develop transferable skills, decision making, problem solving and communication.

Entry requirements:

5 x GCSE grades 9-4.
A grade 4 in Maths is required.

Employment:

Equipping them to apply for employment or higher apprenticeships in a wide range of industry sectors.

University:

This qualification provides the mathematical skills to support students progressing to higher education to study subjects that 'use' mathematics including, for example, biology, business, geography, health and social care, nursing and psychology.

Employability skills:

Prepares students for the range of varied contexts that they are likely to encounter in future employment and life.

Questions

EXTENDED PROJECT QUALIFICATION

Edexcel Level 3 Extended Project

The Pearson Edexcel Level 3 Extended Project allows learners to study a topic area which extends their learning in their area of study, as a standalone qualification.

This course offers UCAS points.

Learners select one of the four units.

Units (one must be selected):

Dissertation
Investigation/Field Study
Performance
Artefact

Assessment:

Completion of a project where the theme is determined by the student. This qualification is assessed by the tutor-assessor.

Personal attributes:

Organised, self motivated and curious.

Skills:

Adaptable and resilient, communication skills, creative, critical thinking, effective researcher.

Entry Requirements:

There is no requirement for prior learning. This qualification supports progression into further education, training or employment by developing skills in key areas such as planning, research, project management and self-reflection.

Employment:

Dependant upon the choice of your project and theme but especially those where research skills and continued learning are relevant.

University:

Undergraduate or Foundation degrees in a range of subjects. Can support specific degrees dependent upon the theme of the project.

Employability skills:

Prepares students for the range of varied contexts that they are likely to encounter in future employment and life.

Questions

Goodwin Academy

Putting it all together

Delivering the BEST Sixth Form education



Choosing a programme of study

It is important that you consider your long term plan and choose a combination of subjects that will support you in the future.

On the next few slides are some suggested combinations you might wish to consider

These are just some suggestions you can choose any combination within the option blocks to suit what you like to study.



Administrative/ Legal and Business Pathways

Are you interested in running your own business, working in marketing and advertising, accountancy, legal profession, below are some ideas that might help you select a combination of subjects to support you on that path

Administrative/Legal Pathway (this includes careers with local government, legal profession and much more)			
	English A Level	Uniformed Protective Services BTEC	Applied Psychology
	English A Level	History A Level	Applied Psychology
Criminology	English A Level	History A Level	
Criminology	English A Level		Applied Psychology
Criminology		History A Level	Applied Psychology
Criminology	Business BTEC		Applied Psychology
Business Pathway (this includes careers in marketing, management, accounting and much more)			
Criminology	Business BTEC	Uniformed Protective Services BTEC	
	Business BTEC	Uniformed Protective Services BTEC	Sport Single
	Business BTEC	Uniformed Protective Services BTEC	Applied Psychology
	Business BTEC	History A Level	Applied Psychology
Criminology	Business BTEC	History A Level	

Creative Pathway

Are you interested in the creative industry such as becoming a photographer, artist, working in advertising and marketing below are some ideas that might help you select a combination of subjects to support you on that path

Creative Pathway (this includes carers in the Arts as a photographer, artist, and much more)			
	Photography A Level	Art A Level	Applied Psychology
Criminology	Photography A Level	Art A Level	
	Photography A Level	Art A Level	Sport Single

Health and Public Services Pathways

Are you interested in helping others in a medical or public services setting like Border Force below are some ideas that

Health Services Pathway (this includes careers in nursing, midwifery, pharmaceuticals, social work, mental health, and wellbeing and much more)			
Biology A Level	Health and Social Care	Applied Science	
	Health and Social Care	Applied Science	Applied Psychology
Biology A Level		Uniformed Protective Services BTEC	Applied Psychology
Biology A Level		Applied Science	Applied Psychology
Biology A Level	English A Level	Uniformed Protective Services BTEC	
Public Services Pathway (this includes careers in the police, paramedic, social worker, forensics and much more)			
Criminology		Applied Science	Applied Psychology
Criminology	English A Level		Applied Psychology
	English A Level	Uniformed Protective Services BTEC	Applied Psychology
Criminology	English A Level	Uniformed Protective Services BTEC	
Criminology		Uniformed Protective Services BTEC	Applied Psychology
Biology A Level		Uniformed Protective Services BTEC	Single Sport
Biology A Level	English A Level		Applied Psychology

Sport and Sports Science Pathways

Are you interested in working in Sport as a Physiotherapist, coach, manager below are some ideas that might help you select a combination of subjects to support you on that path

Sports/ Sports Science Pathway (this includes careers as a physiotherapist, sports coach, team manager and much more)			
Sport Double	Business BTEC		Single Sport
Biology A Level	Business BTEC		Single Sport
Biology A Level		Applied Science	Single Sport
	Business BTEC	Applied Science	Single Sport
Sport Double		Applied Science	Sport Single
Sport Double		Uniformed Protective Services BTEC	Sport Single

There are more combinations too! These are just some ideas to get you thinking

Make the Right Choice for You

Here is some advice to students when making your Sixth Form Option Choices:

1. Choose what YOU want to study, don't worry about what your peers are choosing
2. Have you researched the entry requirements for future study/career aspirations. Will your chosen sixth form courses take you where you want to go next?
3. Does your selection of options draw on your strengths in terms of assessment? Consider how the courses are assessed, if you prefer coursework then BTEC/ Applied courses may suit you better than an A Level which is 100% exam. Think about how you learn and where you will be successful.
4. Have you have read the course details and spoken to relevant staff, to make sure the subject appeals to you
5. Consider a selection of options that allows for breadth, so you are not limiting future pathways.
6. Ultimately consider, will I enjoy studying this subject?



Goodwin Academy Sixth Form

A Place to Become Future Ready

