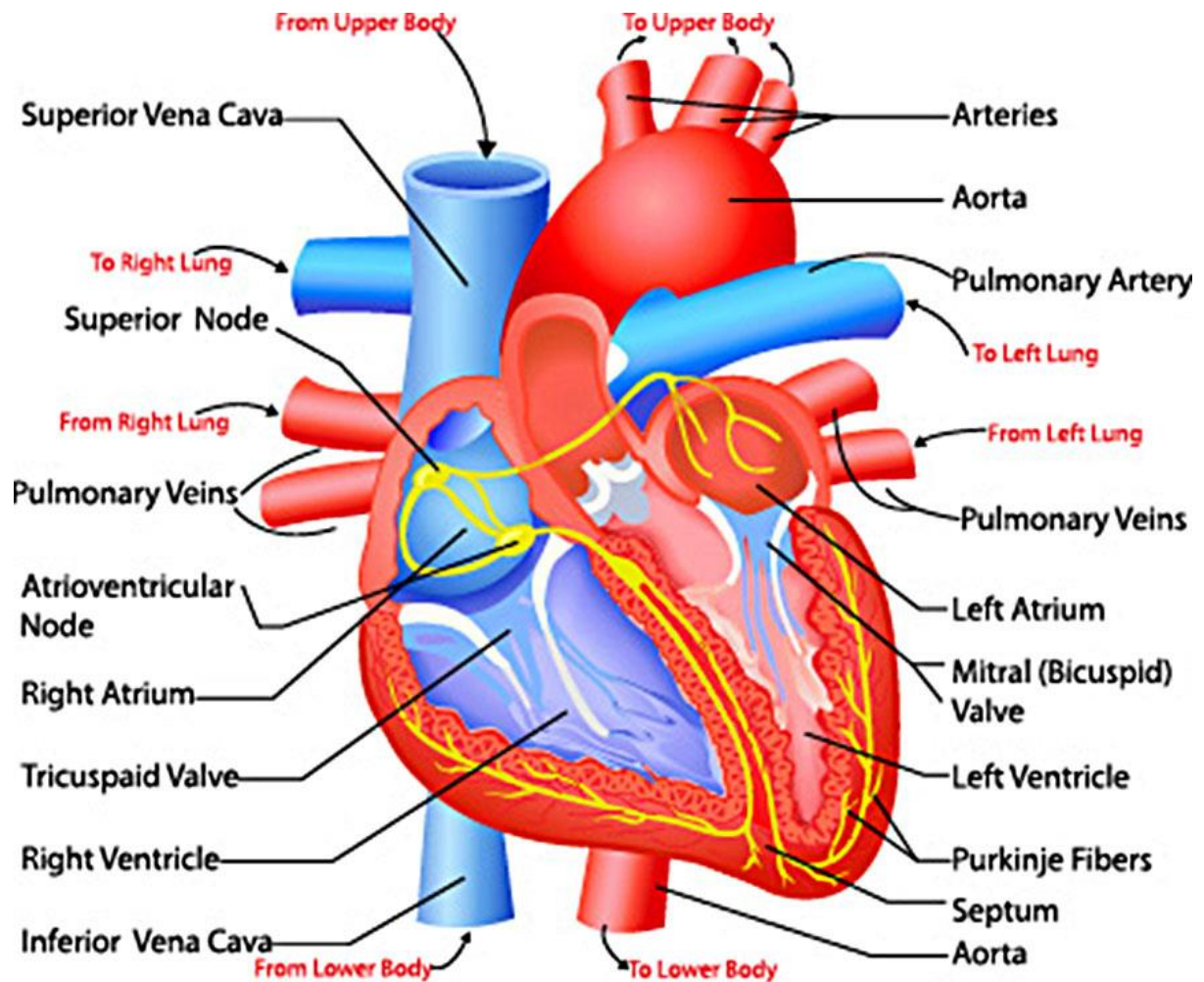


L3 Health and Social Care - Unit 4 Anatomy and physiology for HSC
LO1 The Cardiovascular System
Bridging Task

Assignment 1

1 Develop an activity to help you label the heart effectively. This should be a reusable and interactive activity that you can use to learn and revise from.



L3 Health and Social Care - Unit 4 Anatomy and physiology for HSC
LO1 The Cardiovascular System
Bridging Task

2. Find images for each of the following components of the heart then explain what they are and describe their function. As a start you could use the table below. To extend this task can you put them into a Thinking Map(s) (possibly Circle Maps or a Brace Map)

Heart component (add image)	Description	Function
Arteries		
Aorta		
Pulmonary artery		
Pulmonary veins		
Left atrium		
Mitral (bicuspid) valve		
Left ventricle		
Purkinje (or Purkyne) fibres		
Septum		
Inferior vena cava		
Right ventricle		
Tricuspid valve		
Right atrium		
Atrioventricular node		
Pulmonary veins		
Sinoatrial (SA) node		
Superior vena cava		

3. Watch the following youtube video and create a flow map to accompany the cardiovascular cycle <http://www.youtube.com/watch?v=H04d3rJCLCE>

4. Complete the table below to explain the functions of the heart.
 Create a Thinking Map of your choice from this work.

Function	Research and explain
Double pump	
Diastole	
Systole	
Cardiac cycle	

Control and regulation of cardiac cycle

Location and role of SA and AV nodes	
Purkyne fibres	

L3 Health and Social Care - Unit 4 Anatomy and physiology for HSC
LO1 The Cardiovascular System
Bridging Task

Assignment 2

Case study one

Daniel is 40 and has a deskbound job with responsibility for a large team and budget. He has to work to strict deadlines.

He smokes to help deal with the stress. He also relaxes by joining friends for a drink while watching televised sport.

At home he enjoys watching TV and playing computer games and eats a lot of takeaway and microwave meals.

At a recent medical his blood pressure was 155/95 and his BMI was 34.

5. Explain the possible causes and symptoms of Daniel's Hypertension.

Explain the monitoring, treatment and care needed for someone suffering with Hypertension

Explain the impact of this condition on lifestyle, make clear the changes that may need to take place.

You could present this work as a Knowledge mat. The websites below will help.

Further reading – produce a thinking map(s) based on your reading

<https://www.bupa.co.uk/health-information/heart-blood-circulation>

http://biology.about.com/od/humananatomybiology/ss/heart_anatomy.htm

Exam style questions:

Describe what occurs in the heart during systole and diastole.

Systole

.....
.....
.....

Diastole

.....
.....
.....

(4)

Identify two functions of the Sino Atrial (SA) node of the heart.

L3 Health and Social Care - Unit 4 Anatomy and physiology for HSC
LO1 The Cardiovascular System
Bridging Task

1.....

.....

2.....

.....

(2)

Extension study work:

Coronary Heart Disease (CHD) e.g angina and heart attack

Explain the possible causes and symptoms of angina and heart attack.

Explain the monitoring, treatment and care needed for someone suffering with angina and heart attack.

Explain the impact of this condition on lifestyle, make clear the changes that may need to take place.

You could present this work as a Knowledge mat.

The following websites will be helpful:

<https://www.bupa.co.uk/health-information/heart-blood-circulation/coronary-heart-disease>

http://biology.about.com/od/humananatomybiology/ss/heart_anatomy.htm

www.bhf.org.uk

